



# CLASS "A" OFFICE SPACE | FOR LEASE IN RIVERCHASE

1550 Woods of Riverchase Drive | Hoover, AL | 35244 **LEASE RATE: \$16.50/SF**

**NET OF ELECTRICITY AND JANITORIAL SERVICES**

## AVAILABLE SPACE

Suite 300 - 2,500 SF

Suite 100 - 2,500 SF

## DETAILS

- No city or county occupational taxes
- High-end finishes and built in workstations
- Masonry construction
- Close proximity to I-65 & Valleydale Road
- Near restaurants, hotels, and other retail amenities



EXCLUSIVELY OFFERED BY

**SAM CARROLL, SIOR**  
samc@grahamcompany.com

**MATT GILCHRIST**  
mattg@grahamcompany.com

205•871•7100 | [GrahamCompany.com](http://GrahamCompany.com)

Information deemed reliable but not guaranteed



**Graham & Co**

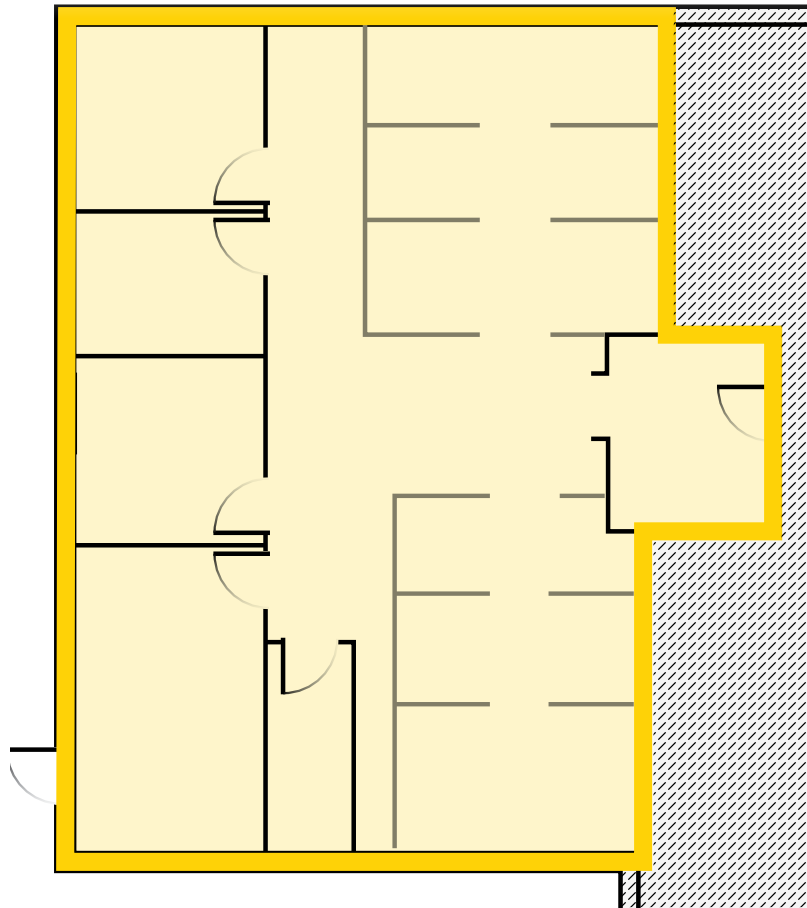


# CLASS "A" OFFICE SPACE | FOR LEASE IN RIVERCHASE

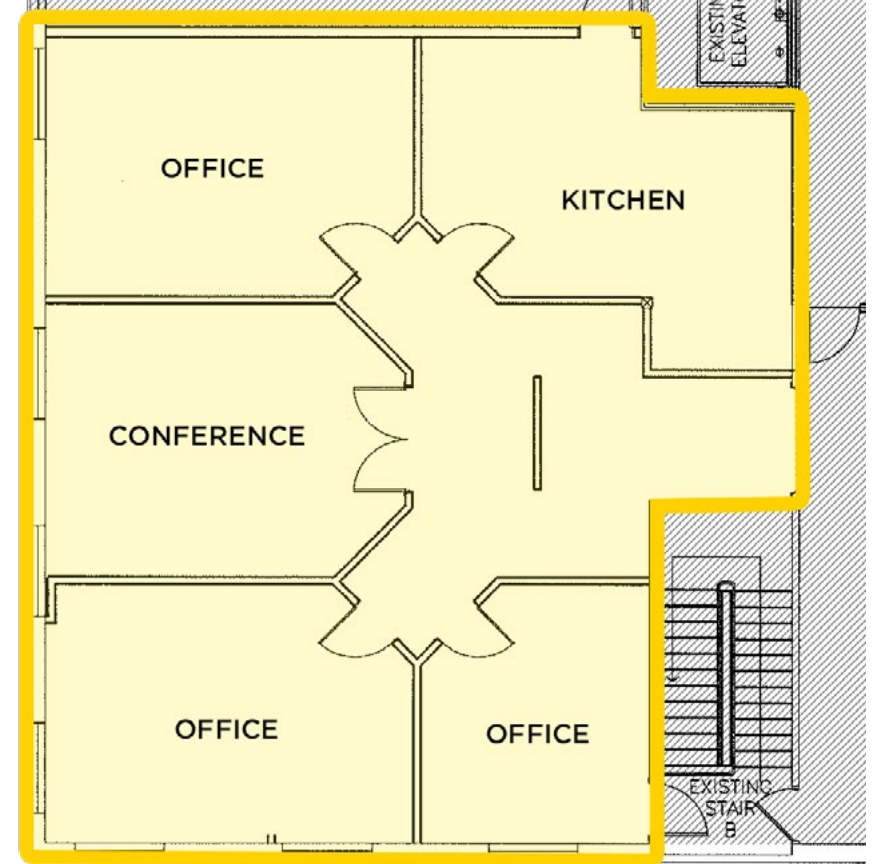
1550 Woods of Riverchase Drive | Hoover, AL | 35244 **LEASE RATE: \$16.50/SF**

**NET OF ELECTRICITY AND JANITORIAL SERVICES**

1st Floor



3rd Floor



EXCLUSIVELY OFFERED BY

**SAM CARROLL, SIOR**  
samc@grahamcompany.com

**MATT GILCHRIST**  
mattg@grahamcompany.com

205•871•7100 | [GrahamCompany.com](http://GrahamCompany.com)

Information deemed reliable but not guaranteed



**Graham & Co**