



WAREHOUSE STORAGE AVAILABLE | FOR LEASE

2308 Meridian Street | Huntsville, AL | 35811

\$4.50/SF • FULL SERVICE

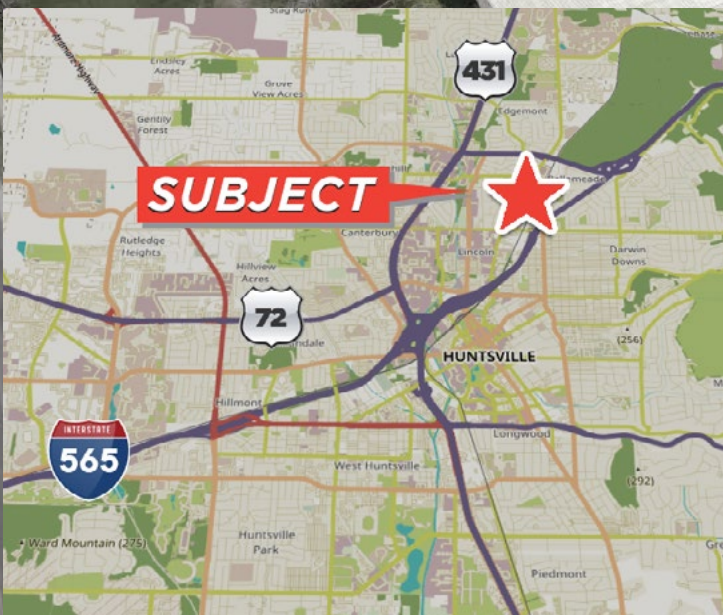
AVAILABLE Q2 2023

AVAILABLE SPACE

56,400 SF with minimal office space (see page 2 for office floor plan)

DETAILS

- Term: Negotiable
- 20' Eaves and 26' to beam ceiling height
- (2) Dock doors (8'x10')
- (3) Grade level drive-in doors (14'x14')
- Sprinkled (dry system)
- Available Q2 2023



EXCLUSIVELY OFFERED BY
GEORGE TWITTY, JR,
georget@grahamcompany.com | 205.999.3324

256.382.9010 | GrahamCompany.com

Information deemed reliable but not guaranteed



Graham & Co

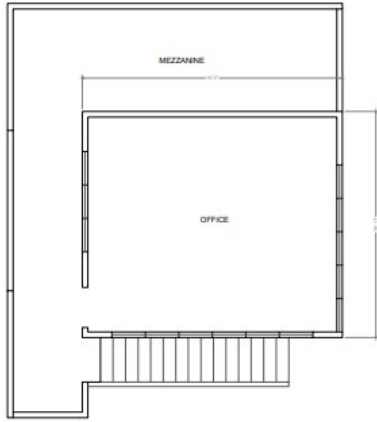
0000000000



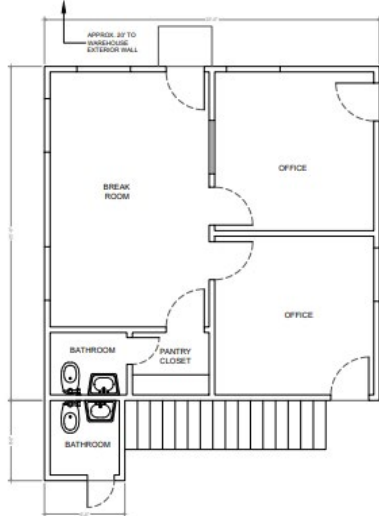
WAREHOUSE STORAGE AVAILABLE | FOR LEASE

2308 Meridian Street | Huntsville, AL | 35811 **\$4.50/SF • FULL SERVICE**

OFFICE FLOOR PLAN

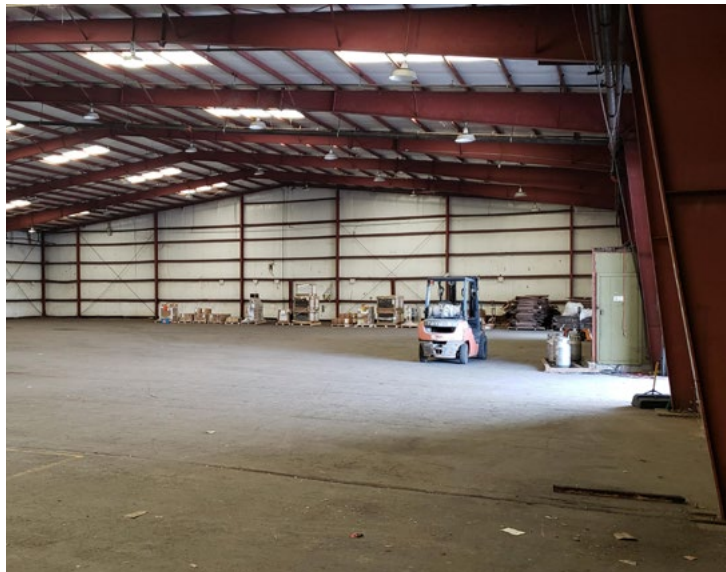


EXISTING
2ND FLOOR



EXISTING
1ST FLOOR

WAREHOUSE INTERIOR



EXCLUSIVELY OFFERED BY
GEORGE TWITTY, JR,
georget@grahamcompany.com | 205.999.3324

256.382.9010 | GrahamCompany.com

Information deemed reliable but not guaranteed



Graham & Co