



# PRIME RETAIL OUTPARCEL AVAILABLE

## HUNTSVILLE, ALABAMA

### GROUND LEASE

Highway 72 West  
Huntsville, AL 35806

### AVAILABLE ACREAGE

0.865 acres

### COMMENTS

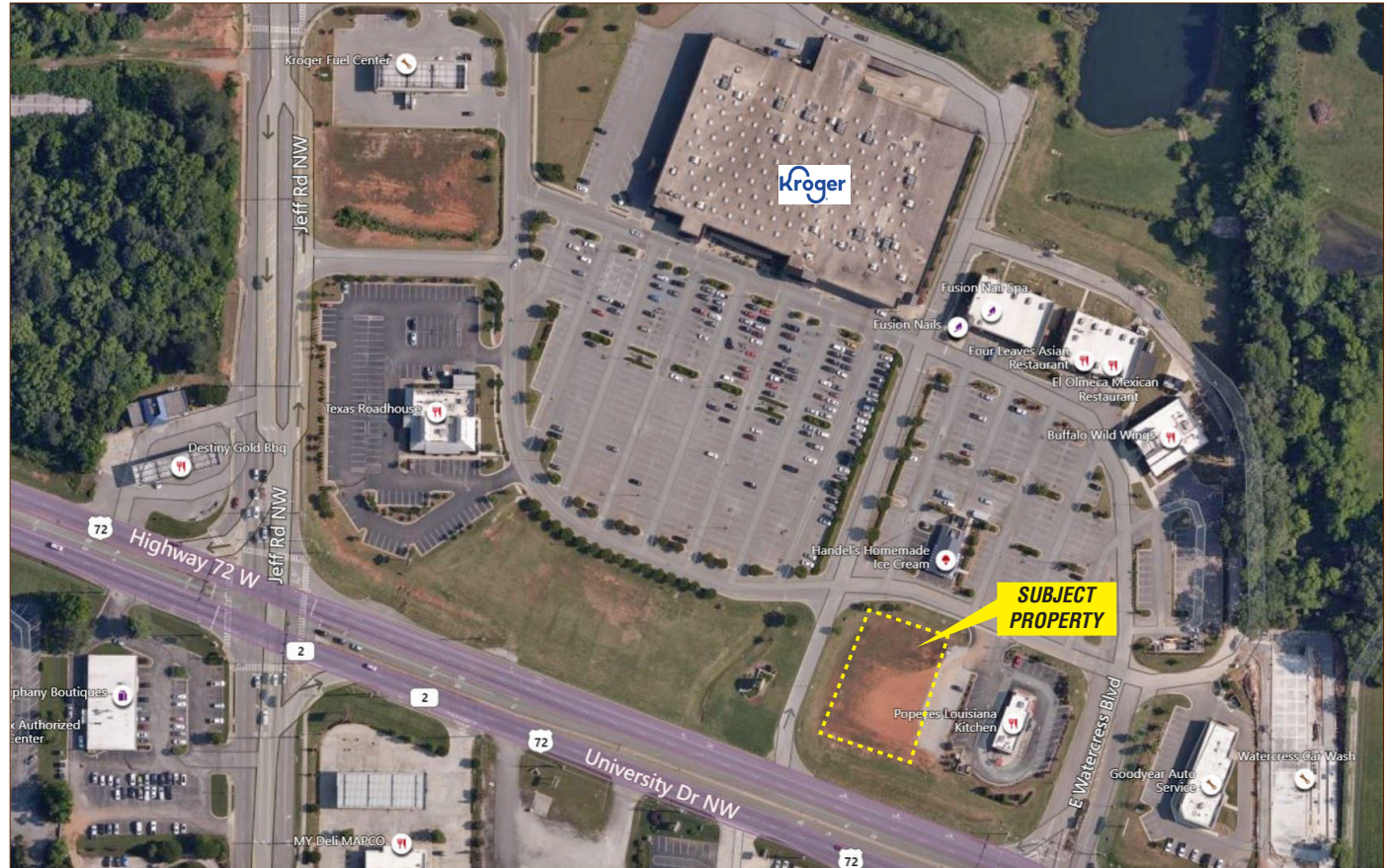
- C-4 Zoning
- Ideally suited for bank branch, restaurant or retail use
- 10 years remain on ground lease
- Outparcel is located within the Watercress development, anchored by Kroger
- Site offers excellent visibility on Highway 72, and the center is accessible from both Hwy 72 and Jeff Road
- Outparcel is adjacent to Popeyes Louisiana Kitchen

### EXCLUSIVE AGENT

*Tyler Fanning, SIOR*

tylerf@grahamcompany.com

256.382.9010



305 Church Street SW  
Suite 710  
Huntsville, AL 35801

TEL 256.382.9010  
FAX 256.382.9011  
grahamcompany.com

Information deemed reliable, but not guaranteed.