



THE DANIEL BUILDING | RARE OPPORTUNITY FOR SALE

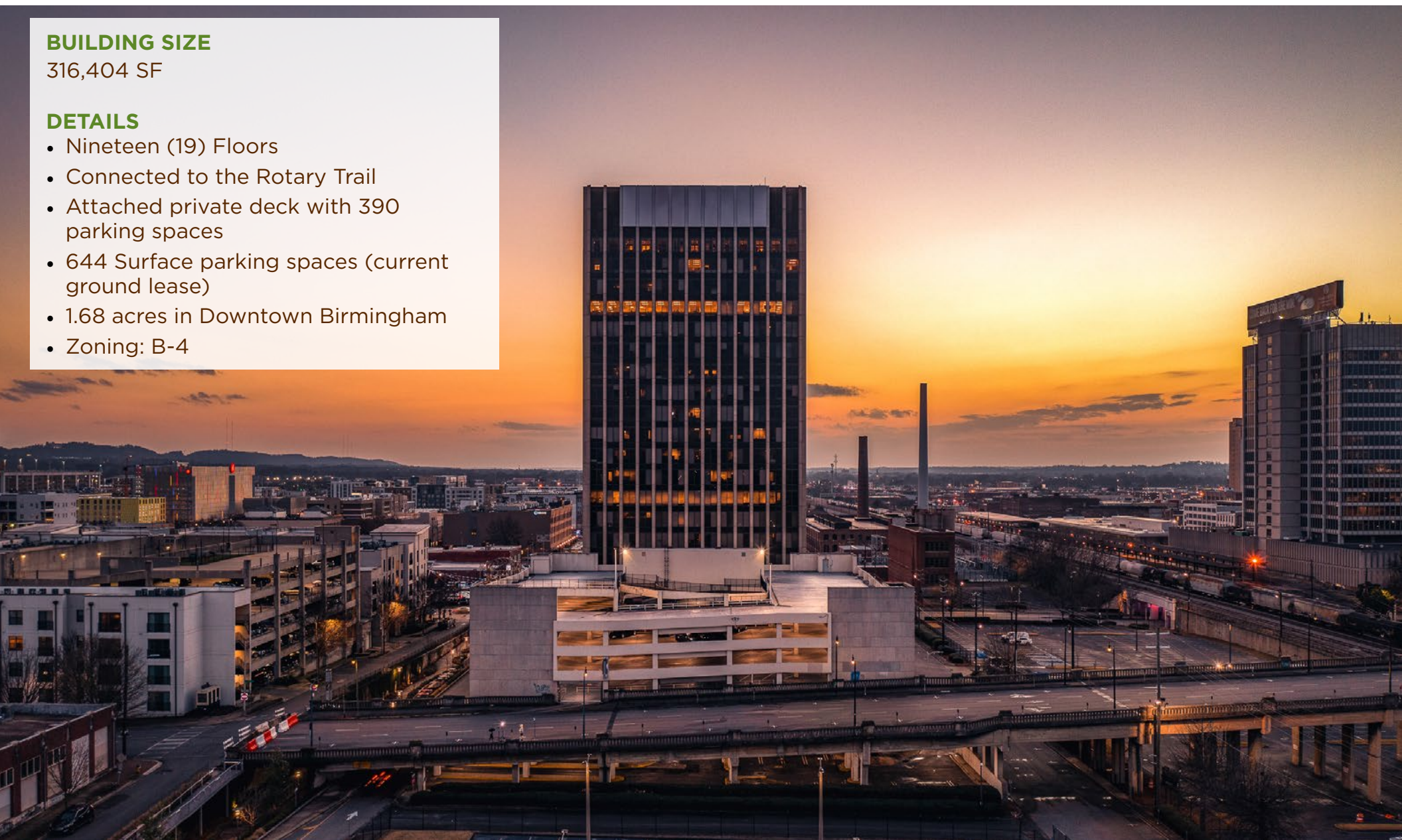
15 20th Street South | Birmingham, AL | 35233 **SALE PRICE: \$16,000,000**

BUILDING SIZE

316,404 SF

DETAILS

- Nineteen (19) Floors
- Connected to the Rotary Trail
- Attached private deck with 390 parking spaces
- 644 Surface parking spaces (current ground lease)
- 1.68 acres in Downtown Birmingham
- Zoning: B-4



EXCLUSIVELY OFFERED BY

MATT GILCHRIST

mattg@grahamcompany.com

205•871•7100 | GrahamCompany.com

SAM CARROLL, SIOR

samc@grahamcompany.com

Information deemed reliable but not guaranteed



Graham & Co

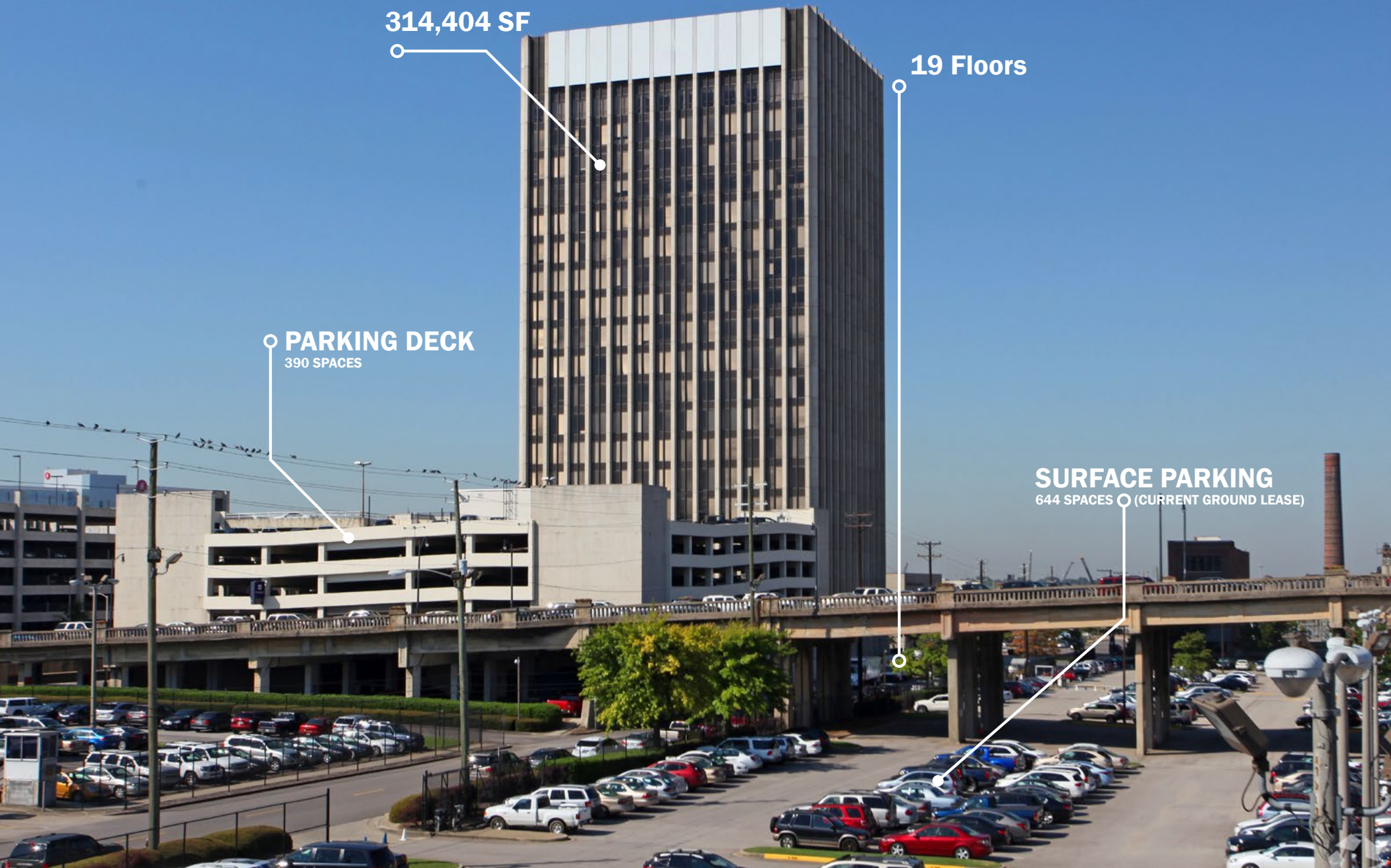
0000000000

314,404 SF

19 Floors

PARKING DECK
390 SPACES

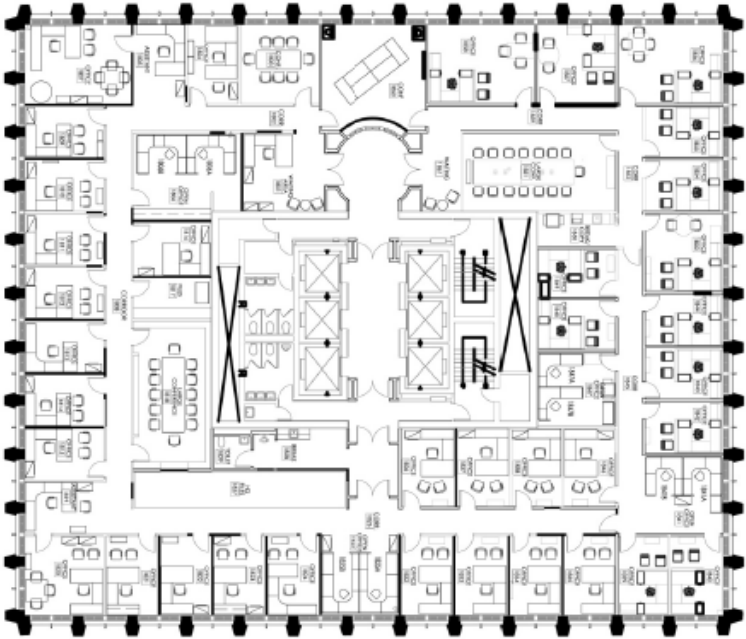
SURFACE PARKING
644 SPACES (CURRENT GROUND LEASE)



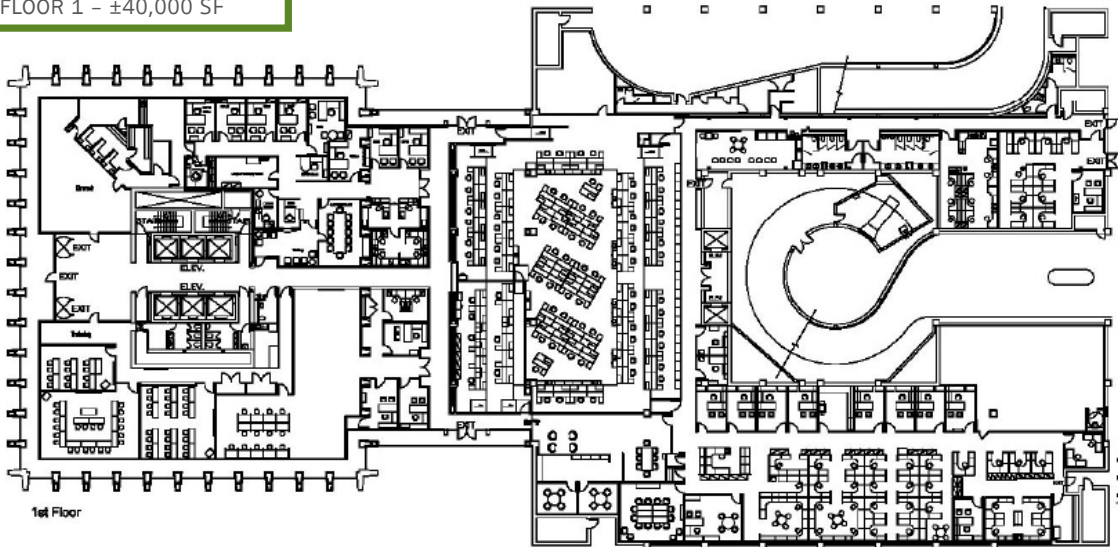
FLOOR PLANS



FLOORS 2-19 – ±15,000 SF
TYPICAL FLOOR PLATE



FLOOR 1 – ±40,000 SF



An aerial photograph of a city street scene. A large, irregularly shaped parking lot is outlined in yellow. To the left of the parking lot is a tall, modern building with a striped facade. To the right is a multi-lane highway with a bridge. Various other buildings and greenery are visible in the background.

**390 SPACE
PARKING DECK
INCLUDED IN
PURCHASE**

**EXISTING GROUND
LEASE IN PLACE FOR
ADDITIONAL 644 SPACES**