



# GULF FRONT REDEVELOPMENT OPPORTUNITY

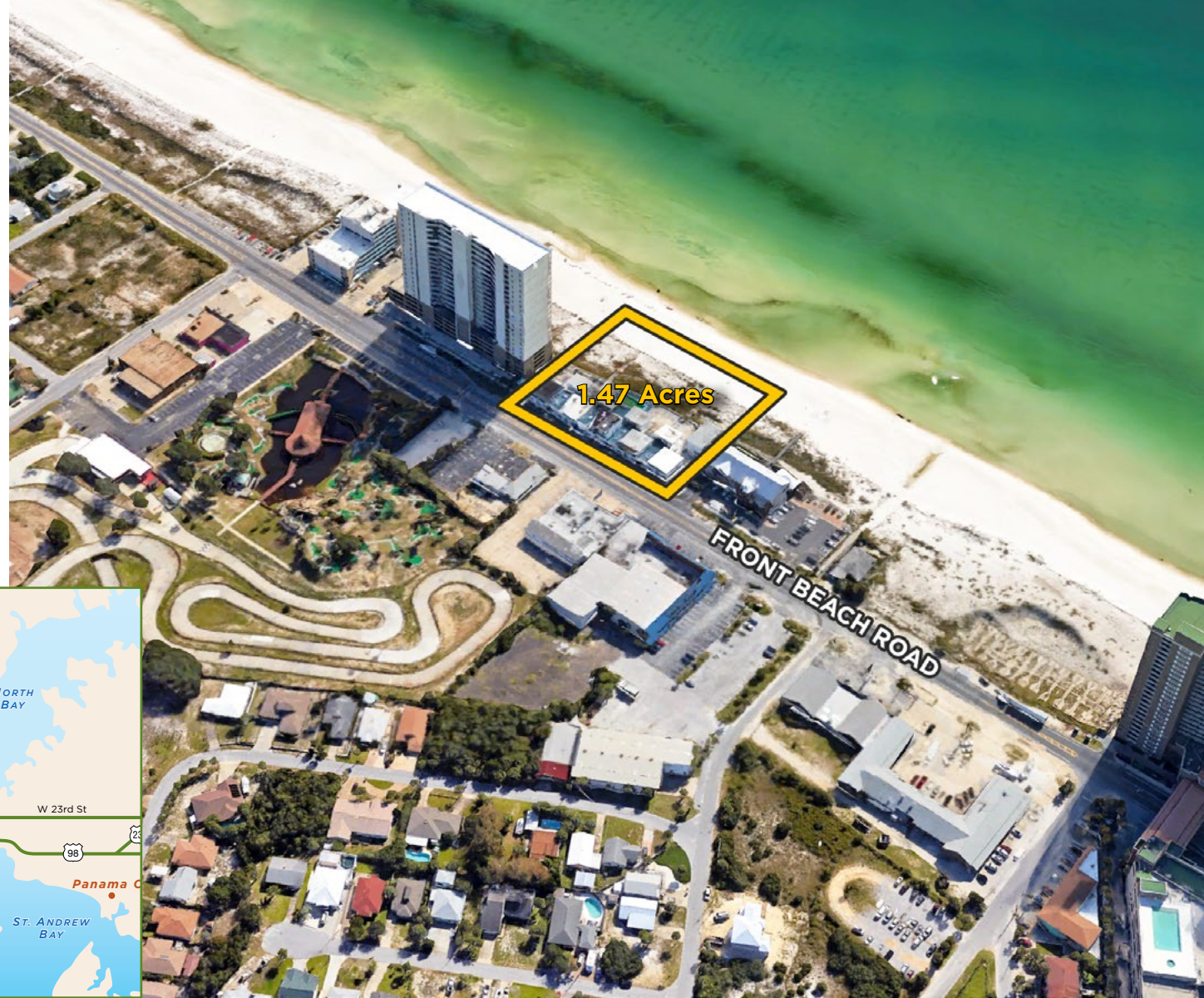
14513 Front Beach Road | Panama City Beach, FL 32413

SALE PRICE: \$9,800,000

**SITE SIZE:** 1.47 Acres

## DETAILS

- 300' of Gulf frontage
- Zoning: CH - Commercial High Intensity; Panama City Beach, FL
- Site can be redeveloped to Single Family or Multi Family Residential
- Property Use: Currently Hotel. Zoning allows for Residential, Hospitality or Commercial
- Centrally located on Panama City Beach in close proximity to Pier Park
- Survey available upon request



EXCLUSIVELY OFFERED BY

**JASON CARNES**

jasonc@grahamcompany.com | 850.830.6593

**KEVIN WILLIAMS, CCIM**

kevinw@grahamcompany.com | 850.348.0808

850.563.1500 | [GrahamCompany.com](http://GrahamCompany.com)

Information deemed reliable but not guaranteed



**Graham & Co**

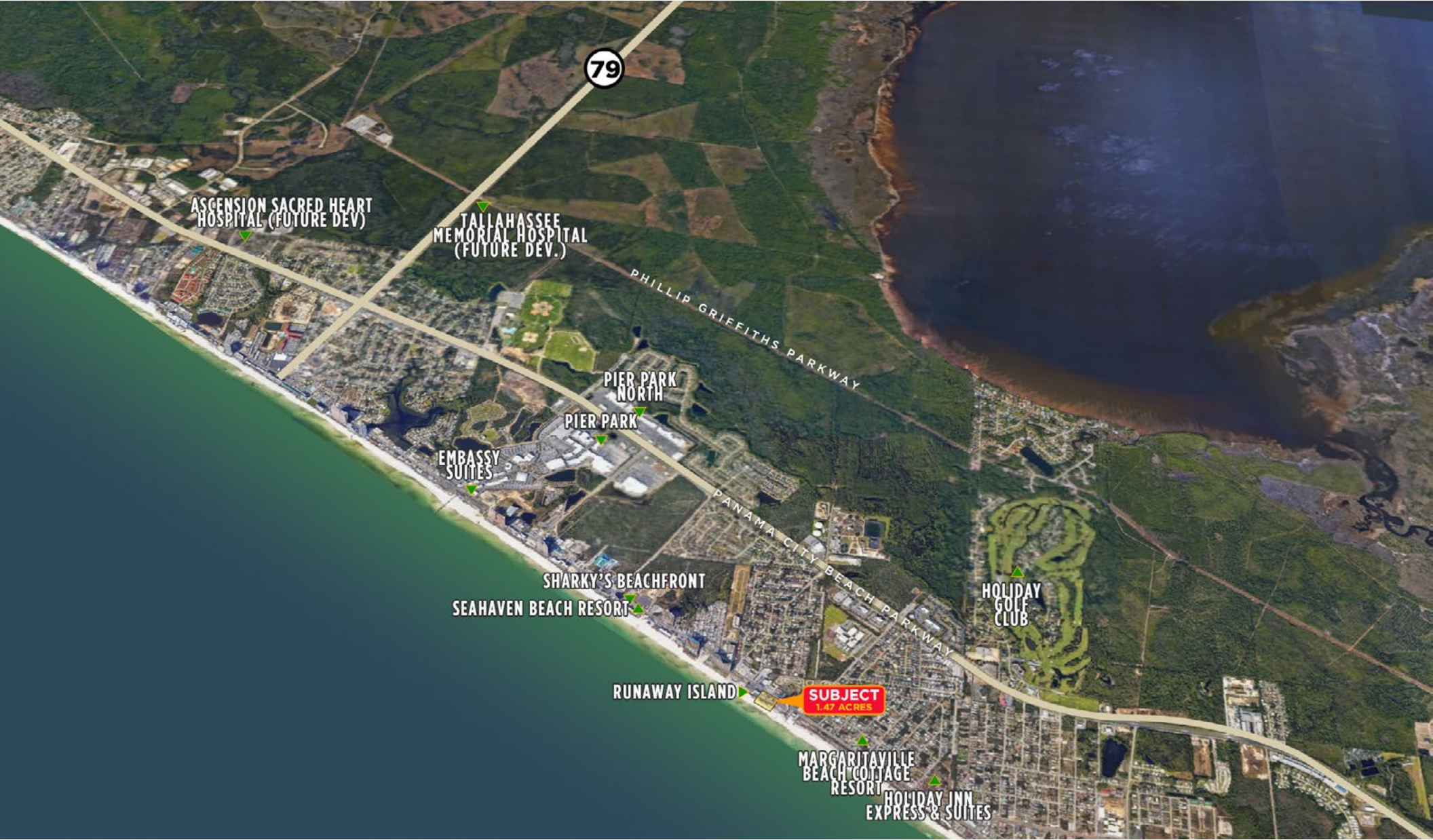
08/20/2020



# GULF FRONT REDEVELOPMENT OPPORTUNITY

14513 Front Beach Road | Panama City Beach, FL 32413

SALE PRICE: \$12,000,000



EXCLUSIVELY OFFERED BY

**JASON CARNES**

jasonc@grahamcompany.com | 850.830.6593

**KEVIN WILLIAMS, CCIM**

kevinw@grahamcompany.com | 850.348.0808

850.563.1500 | [GrahamCompany.com](http://GrahamCompany.com)

Information deemed reliable but not guaranteed



**Graham & Co**