



# TOWN OF SEAHAVEN | FOR SALE

15191 Front Beach Road | Panama City Beach, FL | 32413 **CALL FOR PRICING**

**SITE SIZE:** 45 Acres

## DETAILS

- Master planned mixed-use development including 140,000 SF of retail
- More than 1,350 FT of Gulf Frontage
- Property can be subdivided - various site pads are available
- Property Use: Hospitality/Retail/Multi-Family/Entertainment
- Zoning: Planned Unit Development
- Centrally located in the heart of Panama City Beach with rare gulf front opportunities



EXCLUSIVELY OFFERED BY  
**JASON CARNES**  
jasonc@grahamcompany.com | 850-830-6593  
GrahamCompany.com

**KEVIN WILLIAMS, CCIM**  
kevinw@grahamcompany.com | 850.348.0808

Information deemed reliable but not guaranteed



**Graham & Co**

0823202020





# TOWN OF SEAHAVEN | FOR SALE

15191 Front Beach Road | Panama City Beach, FL | 32413 **CALL FOR PRICING**



Site Map



Conceptual Rendering

EXCLUSIVELY OFFERED BY  
**JASON CARNES**  
jasonc@grahamcompany.com | 850-830-6593  
**GrahamCompany.com**

**KEVIN WILLIAMS, CCIM**  
kevinw@grahamcompany.com | 850.348.0808

Information deemed reliable but not guaranteed



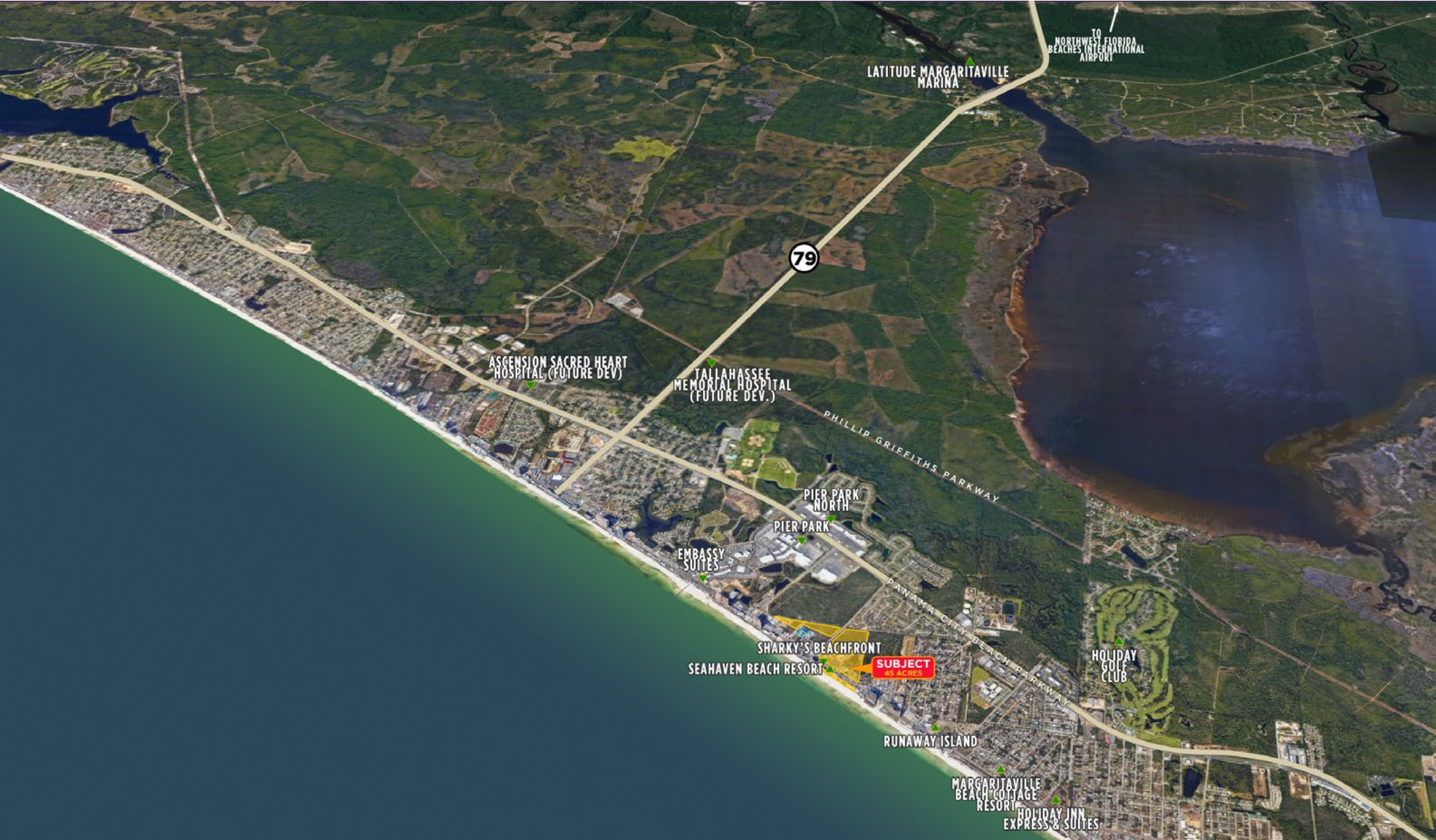
**Graham & Co**





# TOWN OF SEAHAVEN | FOR SALE

15191 Front Beach Road | Panama City Beach, FL | 32413 **CALL FOR PRICING**



EXCLUSIVELY OFFERED BY  
**JASON CARNES**  
jasonc@grahamcompany.com | 850-830-6593  
GrahamCompany.com

**KEVIN WILLIAMS, CCIM**  
kevinw@grahamcompany.com | 850.348.0808

Information deemed reliable but not guaranteed



**Graham & Co**