



# CLASS-A OFFICE BUILDING | FOR SALE IN PCB

17745 Ashley Drive | Panama City Beach, FL | 32413 **SALE PRICE: \$2,300,000**

## AVAILABLE SPACE

11,136 SF on 1.68 acres

## DETAILS

- Built 2006
- 16 surface spaces with additional parking behind building
- Upscale office build-out
- Move-in Condition
- Well located in Panama City Beach within Beach Commerce Park



EXCLUSIVELY OFFERED BY

**KEVIN WILLIAMS, CCIM**

kevinw@grahamcompany.com | 850-348-0808

850.563.1500 | [GrahamCompany.com](http://GrahamCompany.com)

**JASON CARNES**

jasonc@grahamcompany.com | 850-830-6593

Information deemed reliable but not guaranteed

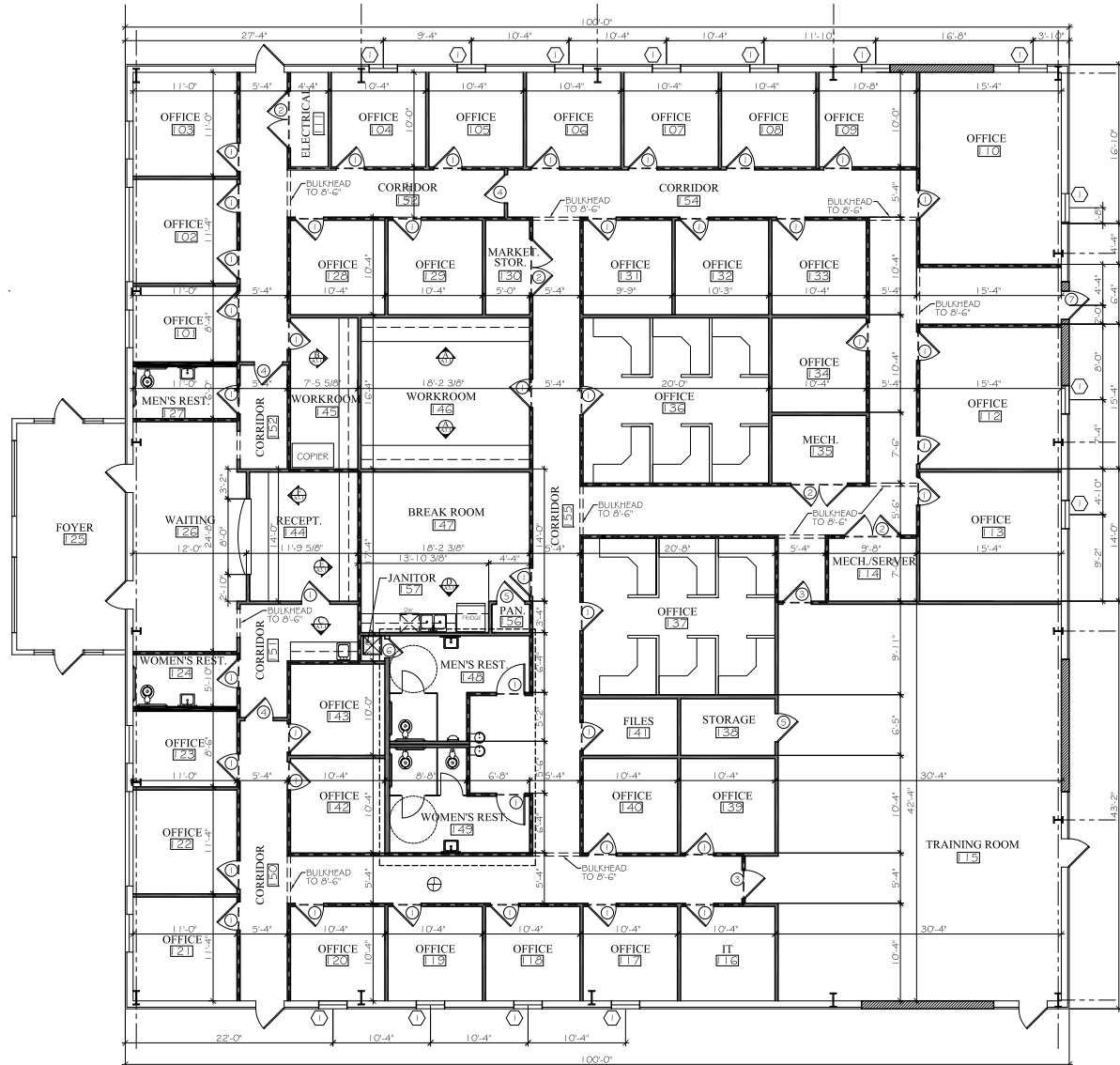


**Graham & Co**



# CLASS-A OFFICE BUILDING | FOR SALE IN PCB

17745 Ashley Drive | Panama City Beach, FL | 32413 **SALE PRICE: \$2,300,000**



FLOOR PLAN  
SCALE: 3/16"=1'-0"

EXCLUSIVELY OFFERED BY  
**KEVIN WILLIAMS, CCIM**  
kevinw@grahamcompany.com | 850-348-0808

**JASON CARNES**  
jasonc@grahamcompany.com | 850-830-6593

850.563.1500 | [GrahamCompany.com](http://GrahamCompany.com)

Information deemed reliable but not guaranteed



**Graham & Co**