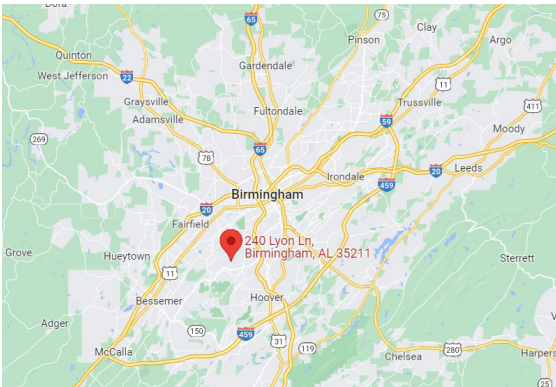




**BUILDING SIZE** 43,680 SF | **AVAILABILITY** 19,880 SF

# 240-A Lyon Lane

*Birmingham, AL 35211*



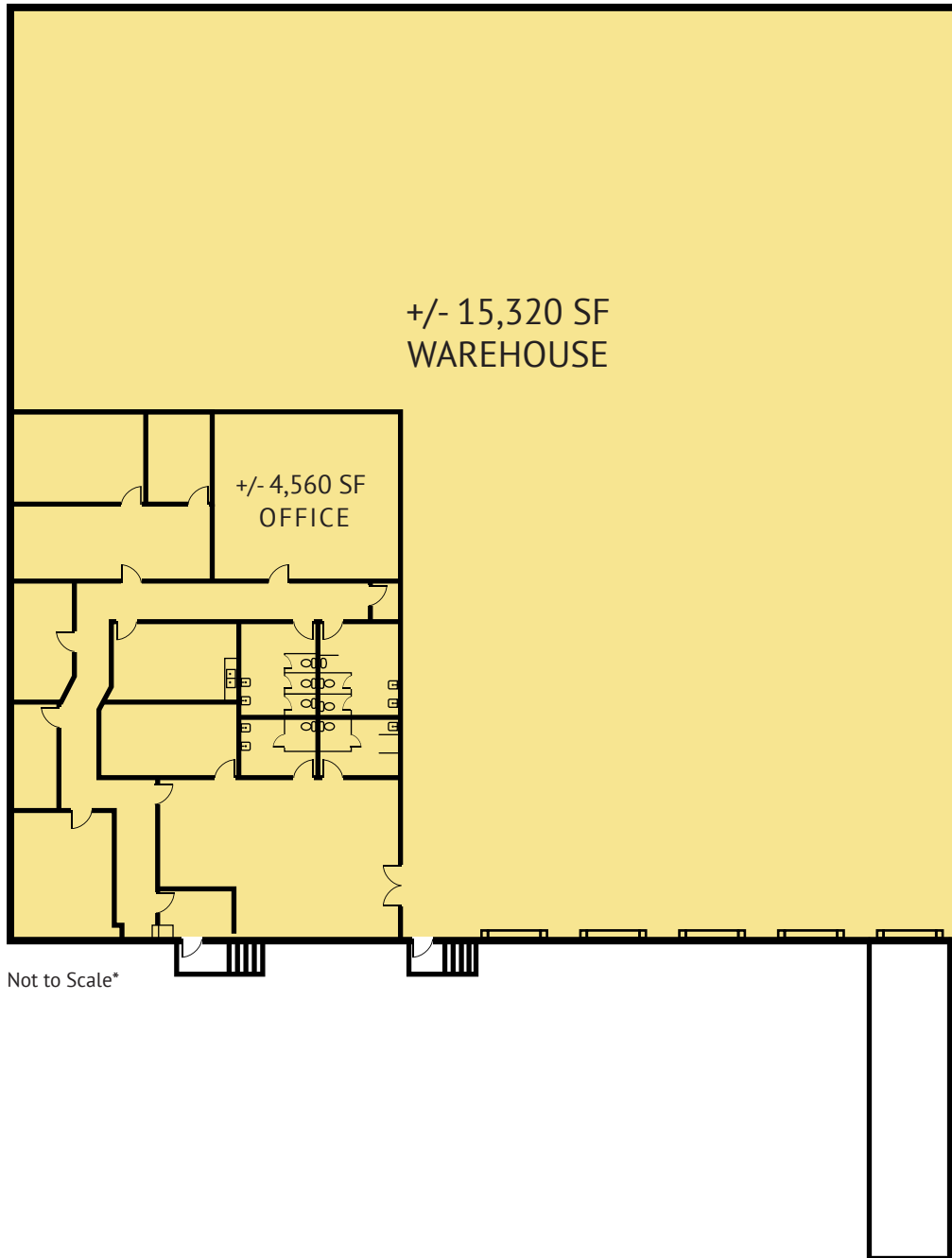
## PROPERTY SPECIFICATIONS

- » Available Space: ±19,880 SF including 4,560 SF of office
- » Conditioned warehouse
- » Four (4) dock high doors
- » One (1) drive-in ramp
- » New LED lighting
- » 22' Ceiling heights
- » ESFR Sprinkler System
- » 120' truck court
- » Located in Oxmoor Submarket

# 240-A Lyon Lane

Birmingham, AL 35211

## FLOOR PLAN



Not to Scale\*