

BANK BUILDING | SUBLEASE

1801 Crestwood Blvd | Birmingham, AL | 35210 **SUBLEASE RATE: \$20^{/SF} • NNN**

MASTER LEASE

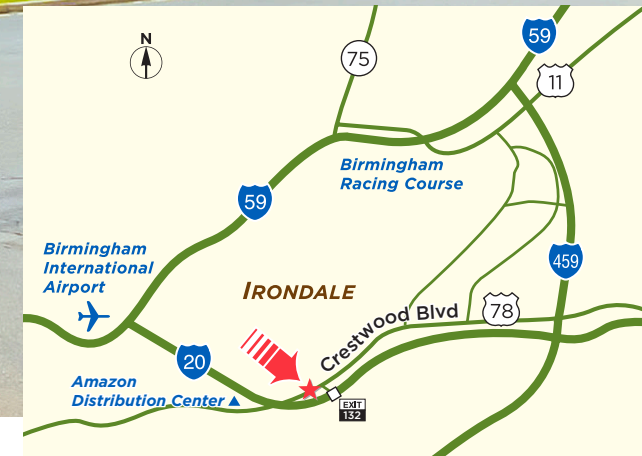
Expires April 30th, 2025

AVAILABLE SPACE

3,129 SF on 0.4 acres

DETAILS

- Signage opportunity
- High visibility from Crestwood Blvd.
- 3.1/1,000 parking ratio
- Two drive-thru lanes & one ATM lane



SUBLEASE OFFERED BY

MATT GILCHRIST **SAM CARROLL, SIOR**
mattg@grahamcompany.com samc@grahamcompany.com

205•871•7100 | GrahamCompany.com

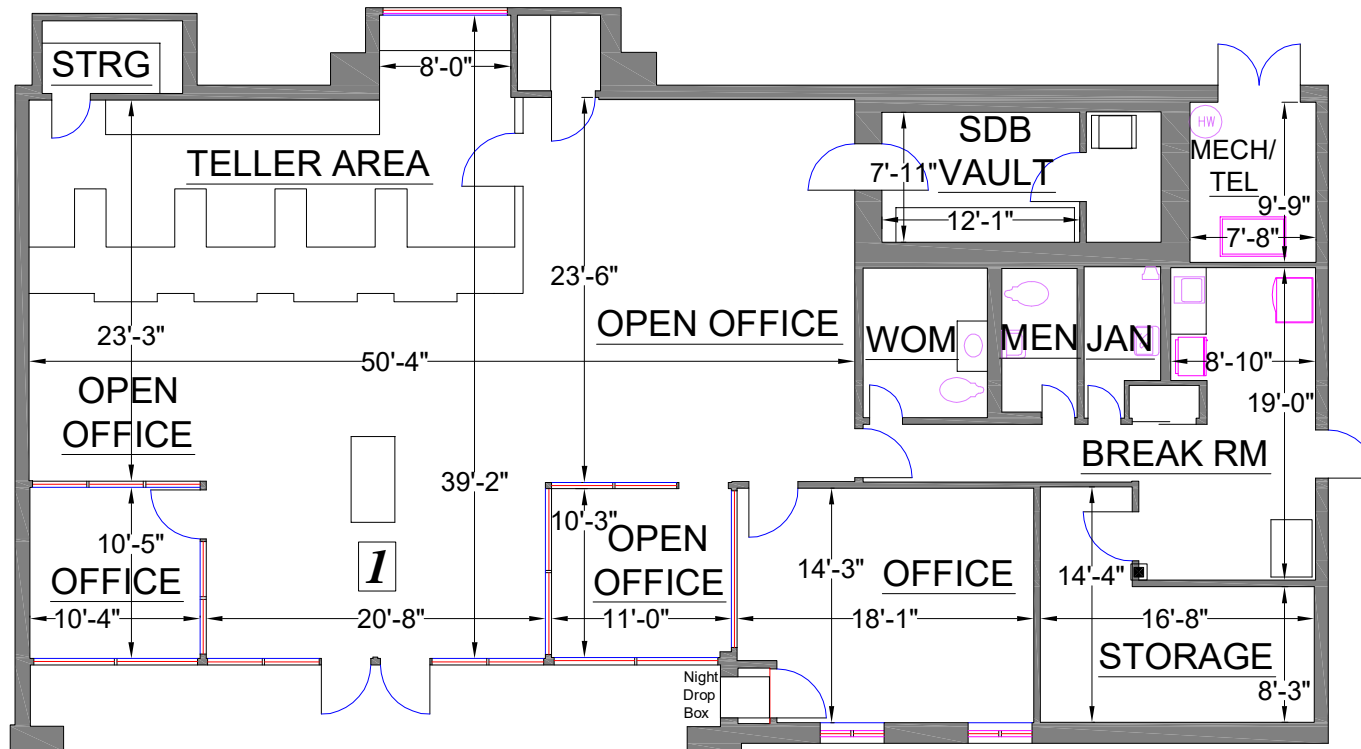
Information deemed reliable but not guaranteed

 **Graham & Co**

BANK BUILDING | SUBLEASE

1801 Crestwood Blvd | Birmingham, AL | 35210 **SUBLEASE RATE: \$20^{/SF} • NNN**

DRIVE THRU



SUBLEASE OFFERED BY

MATT GILCHRIST | **SAM CARROLL, SIOR**
mattg@grahamcompany.com | samc@grahamcompany.com

205•871•7100 | GrahamCompany.com

Information deemed reliable but not guaranteed

