



LAND AVAILABLE • 1.38 +/- ACRES

6691 MOBILE HIGHWAY • PENSACOLA, FLORIDA

SALE

6691 Mobile Highway

Pensacola, FL 32526

SIZE

1.38 acres

SITE COMMENTS

- C-2 zoning
- 300' x 200' lot
- Lot is across from the new Walmart Neighborhood Center

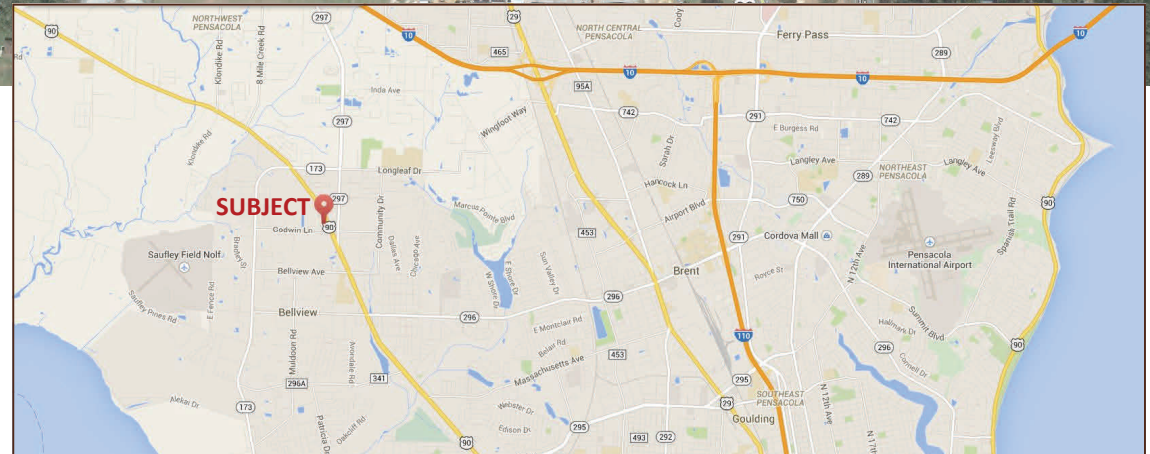
PRICING

\$400,000

EXCLUSIVE AGENTS:

Kevin Williams, CCIM
 kevinw@grahamcompany.com
 850.348.0808

Jason Carnes
 jasonc@grahamcompany.com
 850.830.6593



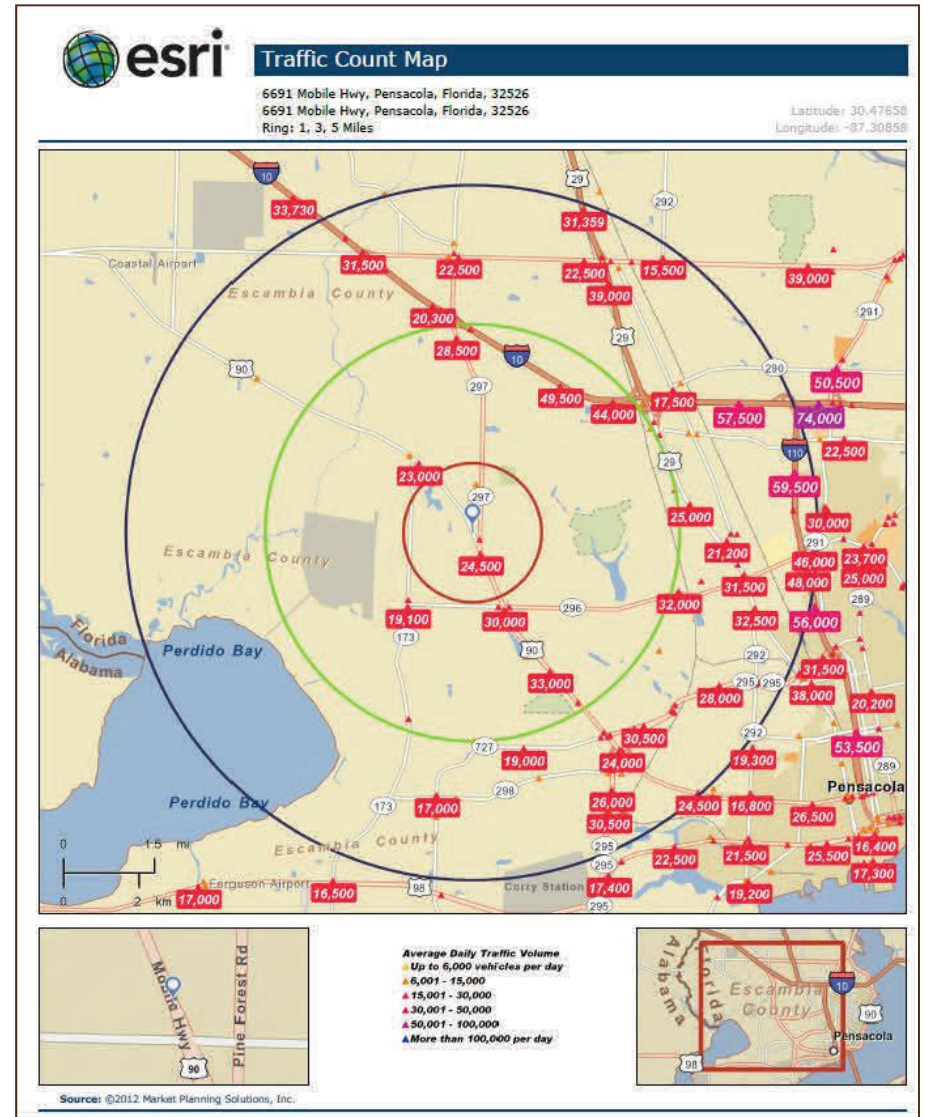
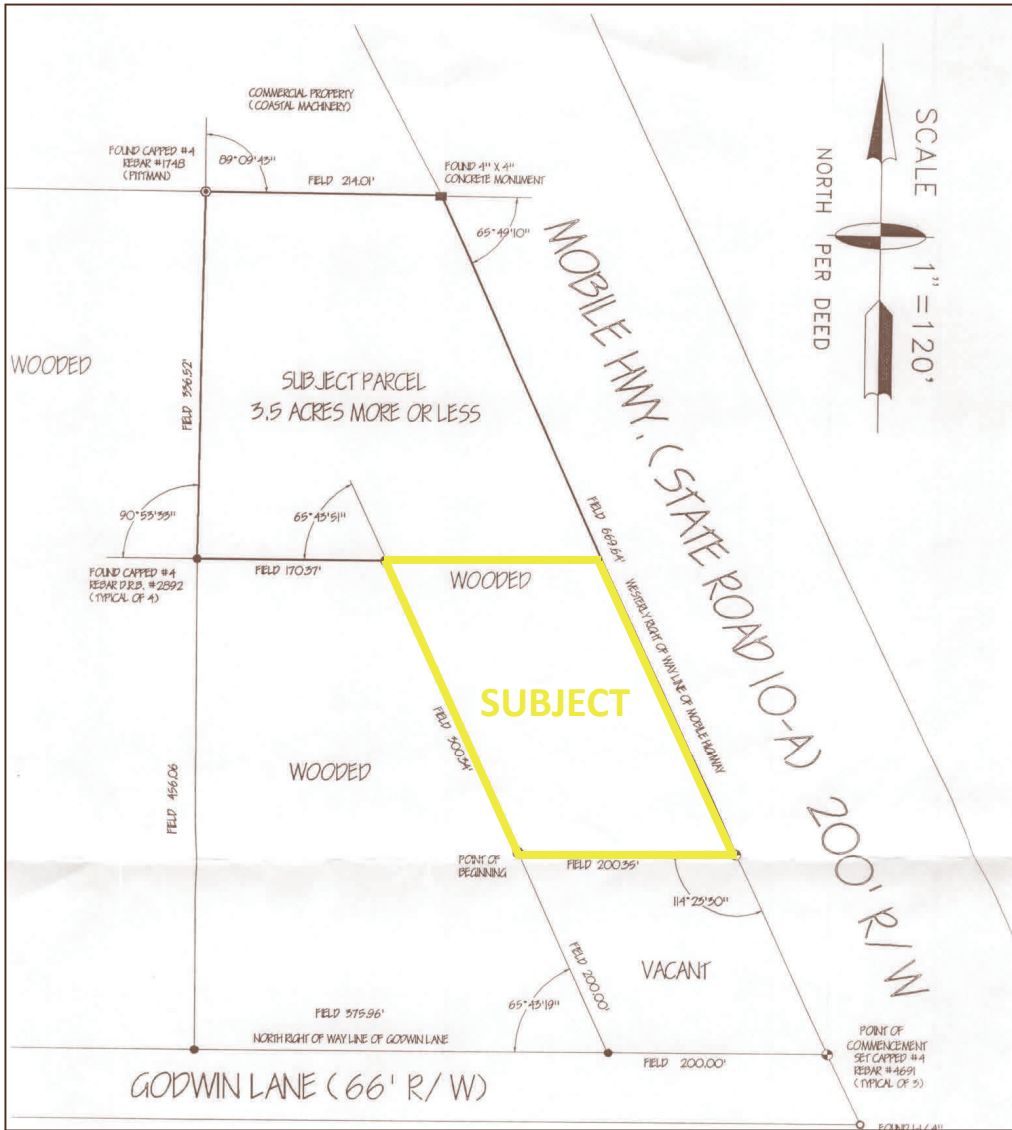
100 Richard Jackson Blvd, Suite 115
 Panama City Beach, FL 32407
 TEL 850.563.1500 WEB www.grahamcompany.com



Graham & Co

Information deemed reliable, but not guaranteed.

LAND AVAILABLE • 1.38 +/- ACRES
 6691 MOBILE HIGHWAY • PENSACOLA, FLORIDA



100 Richard Jackson Blvd, Suite 115
 Panama City Beach, FL 32407
 TEL 850.563.1500 WEB www.grahamcompany.com



Graham & Co

Information deemed reliable, but not guaranteed.