



# HOOVER BUSINESS PARK

HOOVER, ALABAMA

## LEASE

3584 Lorna Ridge Drive  
Hoover, AL 35216

## AVAILABLE

**4,860 SF**

- 3,073 SF office
- 1,787 SF warehouse

## COMMENTS

- 40,365 SF Multi-Tenant Park
- Recently renovated suites
- Grade level loading
- Dock-high loading ramp on site
- 18'-20' Ceiling height
- Extensive landscaping
- Convenient access to Hwy 31, I-65 and I-459
- Concrete tilt-up construction
- 4.2 Acre site



## EXCLUSIVE AGENT

Jordan Tubbs, SIOR  
205.871.7100  
jordant@grahamcompany.com

## LEASE RATE

**\$8.75 PSF, Industrial Gross**



► See Site Plan on reverse side



1801 Fifth Avenue North  
Suite 300  
Birmingham, AL 35203

TEL 205.871.7100  
FAX 205.871.3331  
grahamcompany.com

Information deemed reliable, but not guaranteed.

08062020JD



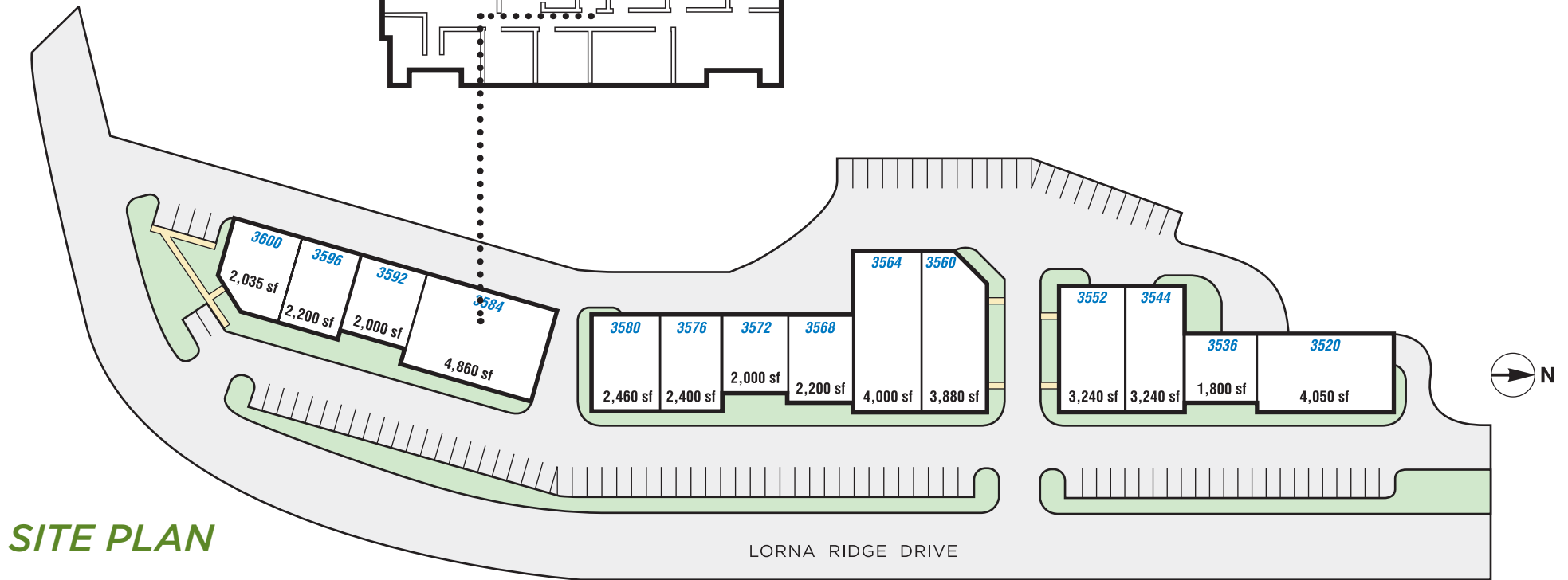
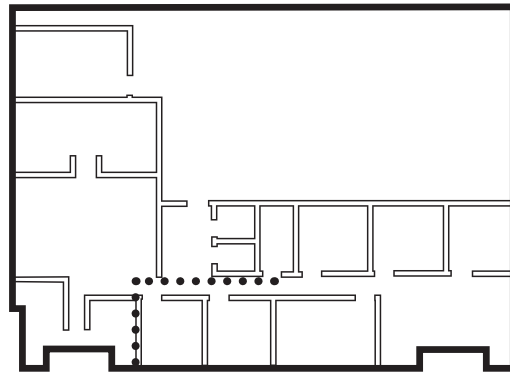
# HOOVER BUSINESS PARK

HOOVER, ALABAMA

## LEASE

3584 Lorna Ridge Drive  
Hoover, AL 35216

**SUITE 3584  
FLOOR PLAN**



**SITE PLAN**

LORNA RIDGE DRIVE



**Graham & Co**

**Exclusive Agent**  
Jordan Tubb, SIOR  
jordant@grahamcompany.com

1801 Fifth Avenue North  
Suite 300  
Birmingham, AL 35203

TEL 205.871.7100  
FAX 205.871.3331  
grahamcompany.com

Information deemed reliable, but not guaranteed.