



# OFFICE SPACE FOR LEASE

BIRMINGHAM, ALABAMA • CAHABA VALLEY DRIVE/HIGHWAY 280

## LEASE

2201 Cahaba Valley Drive  
Birmingham, AL 35242

### AVAILABLE SPACE

1,386 SF

### PROPERTY FEATURES

- Free surface parking in adjacent lot
- Easy access to Highway 280 Conveniently located to shopping, hotels, banks, restaurants & residential
- Large shared conference room with high-end features
- Separate office suite entrance
- Fully equipped break room lounge with already installed refrigerator & dishwasher
- Move-in office space with new paint & carpet throughout

Information deemed reliable, but not guaranteed.

### EXCLUSIVELY OFFERED BY:

Matt Gilchrist  
mattg@grahamcompany.com  
205.871.7100



**LEASE RATE**  
**\$18.00 PSF, full service**



1801 Fifth Avenue North  
Suite 300  
Birmingham, AL 35203

TEL 205.871.7100  
FAX 205.871.3331  
grahamcompany.com



# OFFICE SPACE FOR LEASE

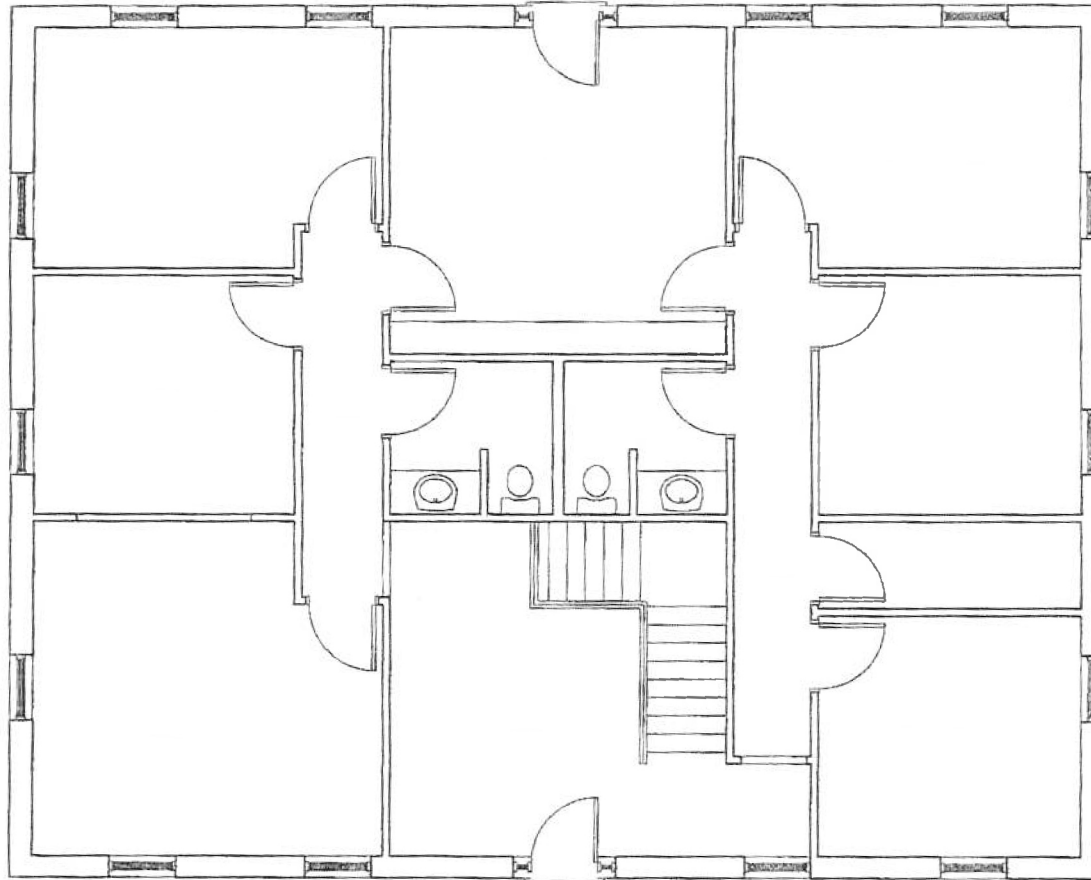
HOOVER, ALABAMA • CAHABA VALLEY DRIVE/HIGHWAY 280

## LEASE

2201 Cahaba Valley Drive  
Birmingham, AL 35242

**LEASE RATE**  
**\$18.00 PSF,**  
**full service**

## FIRST FLOOR PLAN



Information deemed reliable, but not guaranteed.



**Graham & Co**

Exclusive Agent

Matt Gilchrist

mattg@grahamcompany.com

1801 Fifth Avenue North

Suite 300

Birmingham, AL 35203

TEL 205.871.7100

FAX 205.871.3331

grahamcompany.com