



VESTAVIA HILLS | LAND DEVELOPMENT OPPORTUNITY

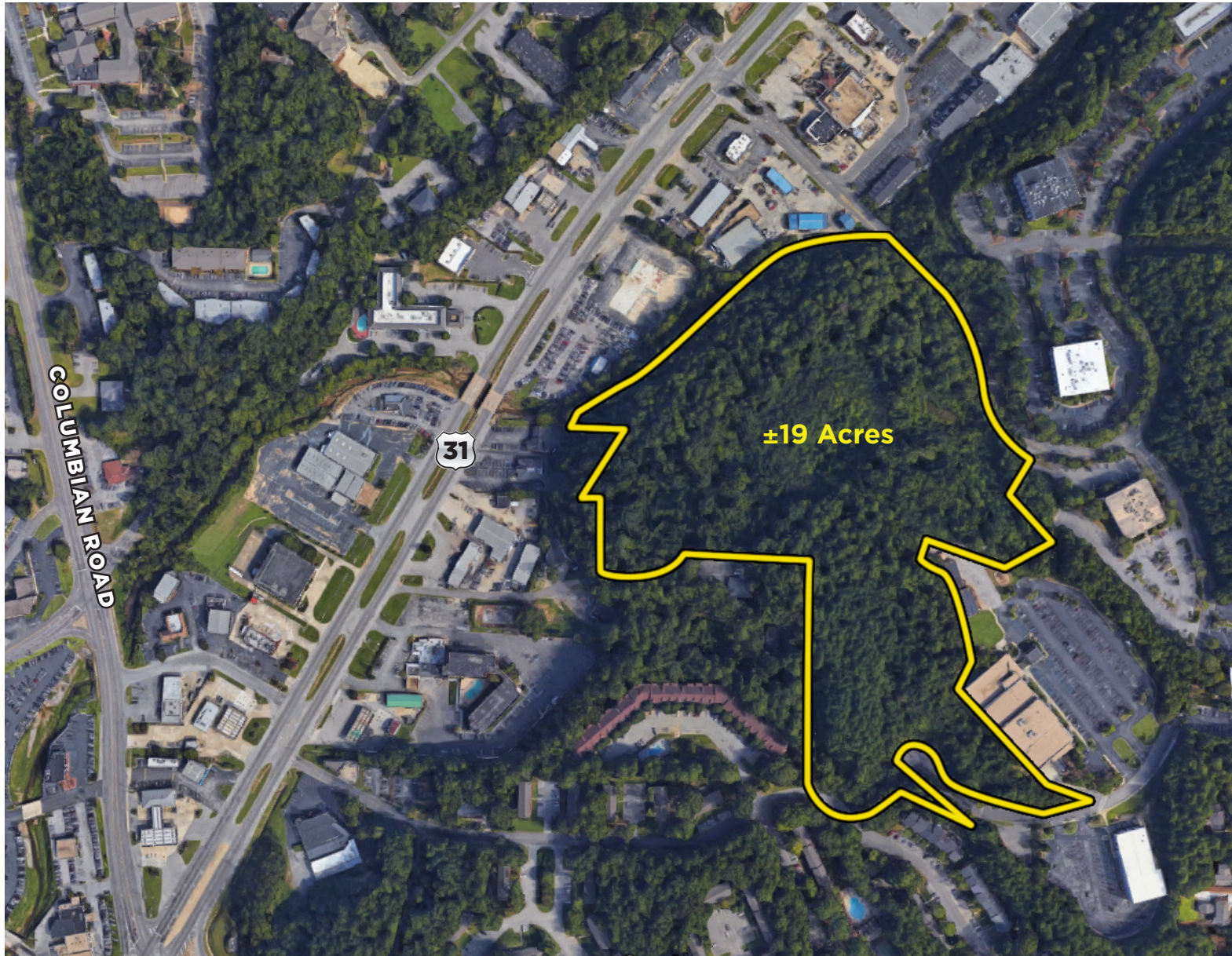
Montgomery Highway | 35216 **SALE PRICE: \$4,350,000**

SITE:

±19 Acres

COMMENTS:

- Great in-fill location
- Zoning — C-1
- Favorable demographics
- High visibility
- Just off heavily traveled Highway 31
- All utilities available on-site
- Easy access to I-65
- Vestavia Hills city limits



EXCLUSIVELY OFFERED BY

WALTER BROWN, SIOR
walterb@grahamcompany.com

MATT GILCHRIST
mattg@grahamcompany.com

205•871•7100 | GrahamCompany.com

Information deemed reliable but not guaranteed



Graham & Co

08/20/2016