



HOOVER OFFICE CONDO | FOR SALE

\$1,585,000

2500 Southlake Park | Hoover, AL | 35244

SALE PRICE: ~~\$1,695,000~~

SUMMARY

FOR SALE: 10,000 SF

Stories: (2) Both floors at grade level

Year Built: 2012

FEATURES

- Front front facing property
- Covered gazebo
- Built-in cubicles
- Professionally stained concrete floors
- Each floor can be divided
- High quality finishes throughout
- Close proximity to I-65 & Valleydale Road
- Near restaurants, hotels, and other retail amenities



EXCLUSIVELY OFFERED BY

SAM CARROLL, SIOR

samc@grahamcompany.com

205•871•7100 | GrahamCompany.com

Information deemed reliable but not guaranteed



Graham & Co

enb000001



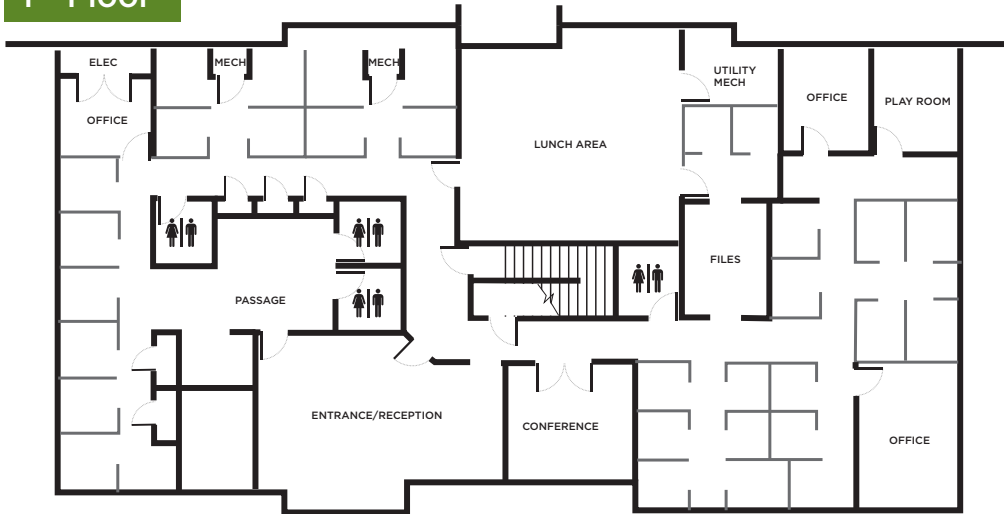
HOOVER OFFICE CONDO | FOR SALE

~~\$1,695,000~~
\$1,585,000

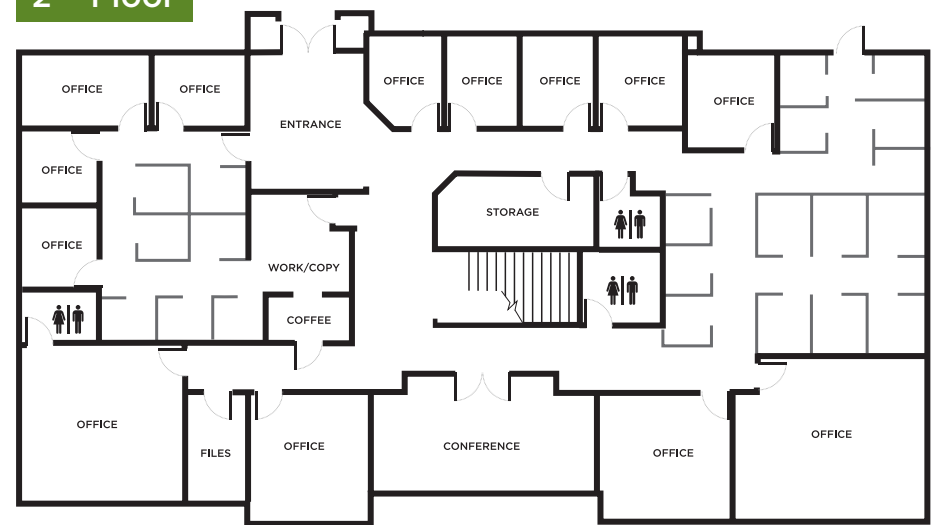
2500 Southlake Park | Hoover, AL | 35244

SALE PRICE: \$1,695,000

1ST Floor



2ND Floor



EXCLUSIVELY OFFERED BY

SAM CARROLL, SIOR

samc@grahamcompany.com

205•871•7100 | GrahamCompany.com

Information deemed reliable but not guaranteed



Graham & Co