



500 MOUNTAIN BROOK OFFICE PARK

500 OFFICE PARK DRIVE • MOUNTAIN BROOK, ALABAMA • 35223

LEASE

500 Office Park Drive
Mountain Brook, AL 35223

AVAILABLE

1,591 RSF - 2nd Floor

1,105 RSF - 2nd Floor

8,224 RSF - 3rd Floor

floor plan attached
Elevator Lobby

MUNICIPALITY

City of Mountain Brook
No city occupational taxes

LEASE RATE

\$19.50 PSF
Full Service

EXCLUSIVELY OFFERED BY:

Jerry Grant, CCIM

205.871.7100

jerryg@grahamcompany.com



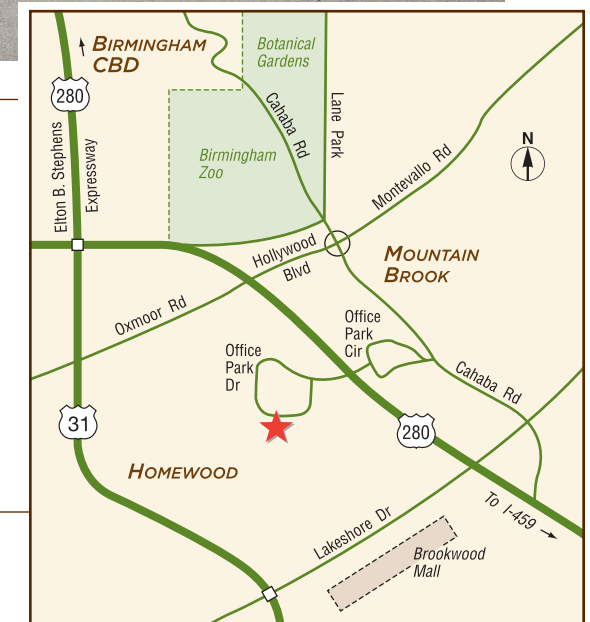
ADDITIONAL INFORMATION

Building:

- New building conference room
- Remodeled restrooms
- Free ample surface parking

Remarks:

- Located prominently in Mountain Brook Office Park on Highway 280
- Easy access to Elton B. Stephens Expressway, Highway 31 and I-459



1801 Fifth Avenue North
Suite 300
Birmingham, AL 35203

TEL 205.871.7100
FAX 205.871.3331
grahamcompany.com

Information deemed reliable,
but not guaranteed.

08202019LL



500 MOUNTAIN BROOK OFFICE PARK BUILDING

500 OFFICE PARK DRIVE • MOUNTAIN BROOK, ALABAMA • 35223

LEASE

500 Office Park Drive
Mountain Brook, AL 35223

AVAILABLE

1,591 RSF - 2nd Floor

1,105 RSF - 2nd Floor

8,224 RSF - 3rd Floor
Elevator Lobby

MUNICIPALITY

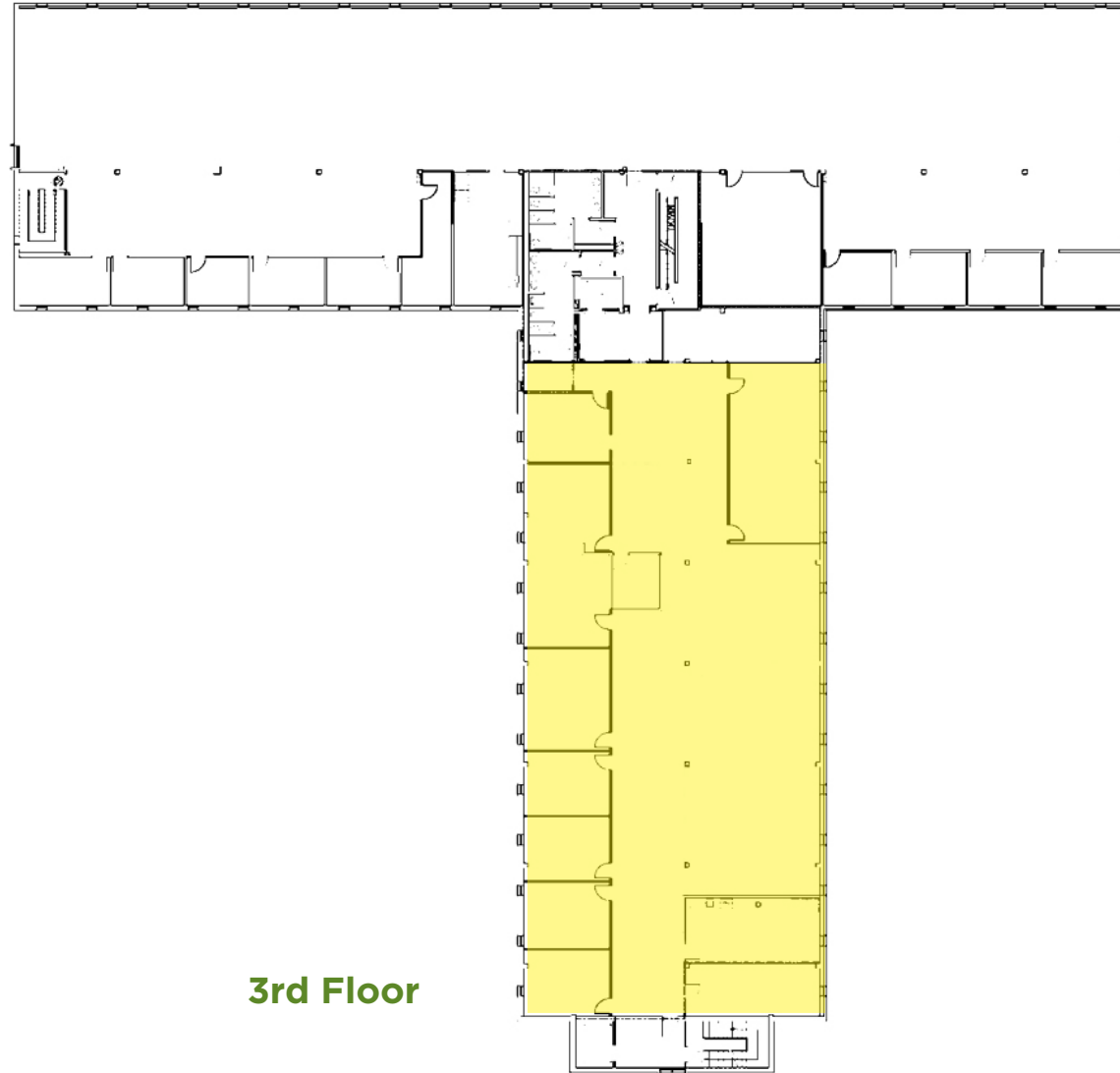
City of Mountain Brook
No city occupational taxes

LEASE RATE

\$19.50 PSF
Full Service

EXCLUSIVELY OFFERED BY:

Jerry Grant, CCIM
205.871.7100
jerryg@grahamcompany.com



1801 Fifth Avenue North
Suite 300
Birmingham, AL 35203

TEL 205.871.7100
FAX 205.871.3331
grahamcompany.com

Information deemed reliable,
but not guaranteed.

08202019LL