

# DEVELOPMENT SITE • ± 4.4 ACRES • HIGHWAY 280

CHELSEA, ALABAMA

**PRICE  
REDUCED**

## SALE

US Hwy 280 & Old Hwy 280  
Chelsea, AL

## PROPERTY INFORMATION

- ± 4.4 acres
- Excellent frontage & visibility on US Hwy 280
- Close proximity to:
  - Walmart
  - Publix Supermarket
  - Walgreens
  - Banks
  - Fast Food Restaurants
  - Residential
- Irregular shape, hilly terrain
- Utilities: available
- Zoning: Shelby County HZ

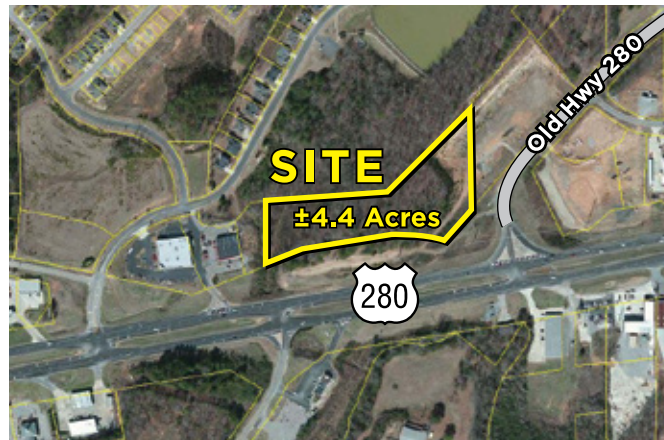


**SALE PRICE:**  
~~\$1,495,000~~  
**\$1,395,000**

Information deemed reliable, but not guaranteed.

## EXCLUSIVE AGENT

Ogden S. Deaton, SIOR  
205.871.7100  
ogdend@grahamcompany.com



1801 Fifth Avenue North  
Suite 300  
Birmingham, AL 35203

TEL 205.871.7100  
FAX 205.871.3331  
grahamcompany.com

10/17/17 JC